



Anne Crescent, Evesham, WR11 1HZ
Evesham

Guide Price
£240,000

Bedrooms: 3

Bathrooms: 1

Receptions: 2

Occupying a prominent corner plot in a popular residential area of Evesham, this is a spacious three-bedroom end-terrace home that perfectly balances family comfort with impressive outdoor versatility. The property immediately welcomes you with a practical front porch, leading into a home that has been thoughtfully maintained and benefits from double glazing and gas central heating throughout.

The ground floor layout is designed for modern living, centred around a bright and airy dual-aspect sitting room that runs the full depth of the house. Opposite, the expansive kitchen/diner serves as the social heart of the home, providing ample space for a large dining table and lots of storage. Practicality is further enhanced by a rear porch which provides access to a downstairs WC and utility room, keeping household chores tucked away from the main living areas.



Upstairs, the property continues to impress with three well-proportioned bedrooms, each offering plenty of space for storage and family life. These rooms are served by a family bathroom. The layout is fluid and functional, making the most of the natural light afforded by its end-of-terrace position.



The exterior of the property is a standout feature, offering far more than the average terrace. The rear garden is private, featuring a decked area for outdoor entertaining and a well-kept lawn. A major highlight is the substantial workshop storage building, offering a perfect solution for those needing a home office, hobby space, or DIY hub. Furthermore, the property benefits from double-gated access to the rear garden, providing excellent convenience and potential for secure off-road parking.

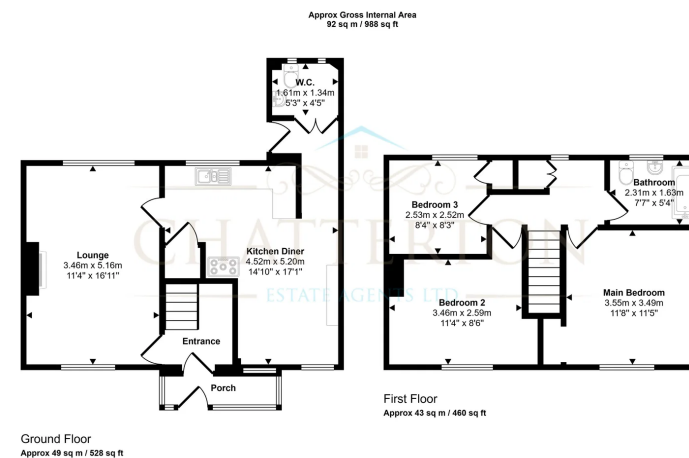
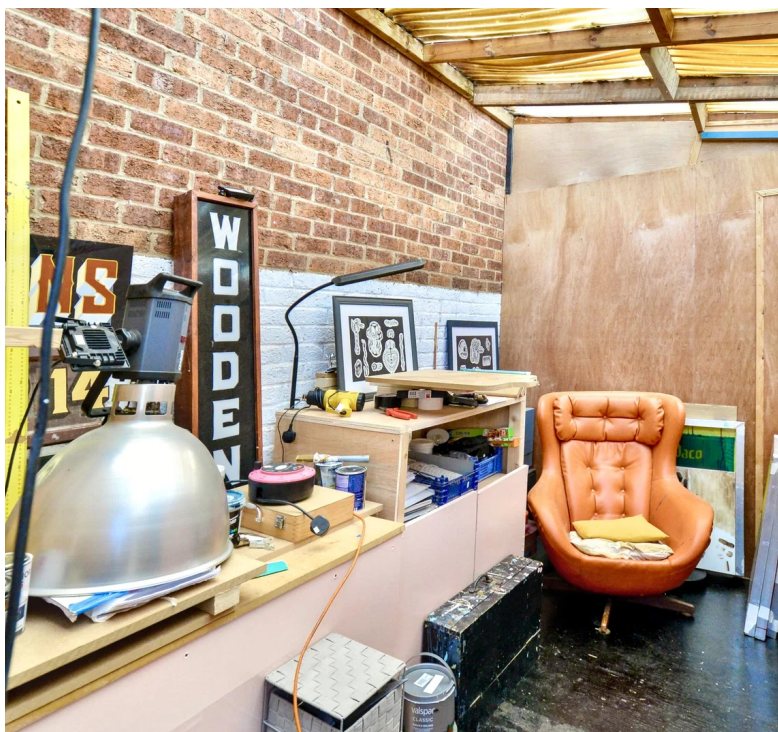
EVESHAM

Evesham is a historic market town located in the Vale of Evesham in Worcestershire, England. Known for its picturesque setting on the banks of the River Avon, Evesham has a rich history dating back to the 8th century, with roots in Anglo-Saxon England. The town was once home to a significant abbey, Evesham Abbey, founded in the 8th century, although much of it was destroyed in the 16th century during the Dissolution of the Monasteries. Today, the remaining bell tower and Abbey Park offer a glimpse into its monastic past.

Evesham is also famed for its lush agricultural land, which has made it one of the UK's prime horticultural areas, often called the "Garden of England." The Vale of Evesham is especially celebrated for its spring blossom trails, as well as for growing produce like asparagus, apples, and plums. This farming heritage is honoured annually through events like the Asparagus Festival.

The town offers a mix of charming architecture, from medieval buildings to Georgian townhouses, alongside modern amenities, independent shops, and popular restaurants. Its location provides excellent transport links, with nearby Evesham train station offering routes to Worcester, Oxford, and London.

Outdoor activities are plentiful, with the



This floorplan is only for illustrative purposes and is not to scale. Measurements of rooms, doors, windows, and any items are approximate and no responsibility is taken for any error, omission or mis-statement. Icons of items such as bathroom suites are representations only and may not look like the real items. Made with Made Easy 360.