

**Newlands, Pershore, WR10 1BP**  
Pershore

Offers Over  
**£300,000**

**Bedrooms: 3**

**Bathrooms: 1**

**Receptions: 2**

Nestled in a highly sought-after pocket of Pershore, this beautifully presented two/three-bedroom property offers a sophisticated blend of contemporary style and classic comfort. From the moment you step inside, the home feels welcoming, having been meticulously maintained to provide a "turnkey" experience for its next owners. The ground floor has been extended to create a cosy functional space whether you are hosting a formal dinner or enjoying a quiet family evening, the space caters perfectly to both relaxation and entertaining.



The heart of the home is the modern kitchen, thoughtfully designed to combine everyday practicality with contemporary style. Offering generous worktop space and ample storage, it provides a highly functional setting for cooking and entertaining alike.

There is plenty of room to accommodate a family dining table, creating a sociable hub for casual meals and gatherings.

A door opens directly onto the garden, allowing natural light to flood the space and providing a seamless connection between indoor and outdoor living – perfect for summer dining and entertaining.



Upstairs, the property continues to impress with two peaceful bedrooms and a converted attic room, each offering a calm retreat from the bustle of daily life. The principal bedroom is particularly inviting, featuring a charming cast iron fireplace that creates an attractive focal point, along with lovely large windows that fill the room with natural light and enhance the sense of space.

These rooms are complemented by a beautifully appointed family bathroom, finished to a high standard and designed to provide both comfort and style.



Practicality is also a key feature outside, with a lovely garage/workshop providing secure parking or invaluable additional storage solutions plus off road parking at the rear—a rare and welcome find in such a central location.

Externally, the property boasts a lovely private garden, expertly designed to balance outdoor enjoyment with low-maintenance upkeep—ideal for summer BBQs or a morning coffee. Situated in the vibrant community of Pershore, you are perfectly placed to enjoy an array of independent shops, local eateries, and scenic green spaces. With excellent transport links and a friendly neighbourhood atmosphere, this home represents a premier choice for those seeking the best of Worcestershire living. An early viewing is highly recommended to appreciate the quality of finish and the superb location on offer.



**Charming market-town living with modern convenience.**

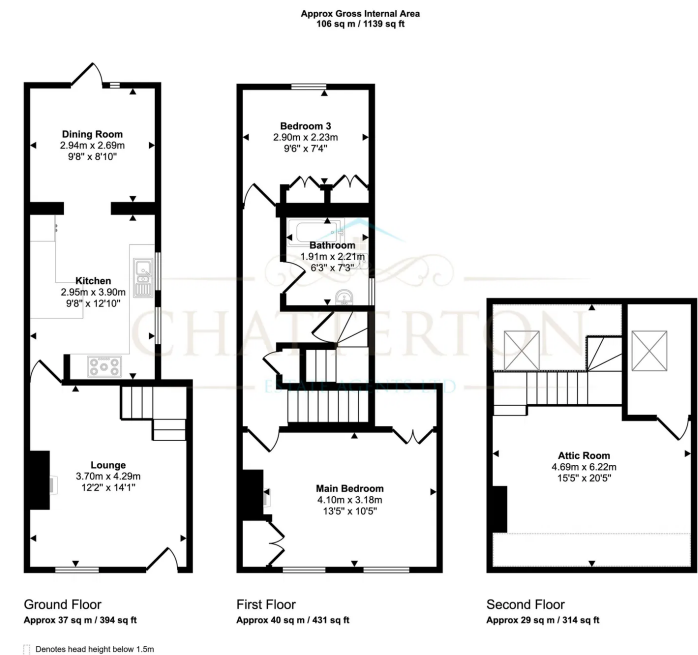
Nestled on the banks of the River Avon, Pershore offers a picturesque setting, historic architecture and a strong community atmosphere. The town combines independent shops, cafés and traditional pubs with everyday amenities and well-regarded local schools – ideal for families and professionals alike.

With excellent road links to nearby Worcester and Evesham, plus a direct rail connection, Pershore provides an easy commute while retaining a peaceful, rural feel.

**Key Highlights:**

- Attractive period properties and modern homes
- Access to beautiful countryside and riverside walks
- Strong sense of community
- Good local schooling
- Well-connected yet tranquil location

Pershore delivers the perfect balance of lifestyle, value and connectivity – a place to truly feel at home.



This floorplan is only for illustrative purposes and is not to scale. Measurements of rooms, doors, windows, and any items are approximate and no responsibility is taken for any error, omission or mis-statement. Icons of items such as bathroom suites are representations only and may not look like the real items. Made with Made Snappy 360.