

Plough Cottages Haselor Lane Hinton-on-the-Green WR11 2RA

Guide Price £550,000

 4  2  2



This three-bedroom period property with a one-bedroom annex, set on three and a half acres of land with stables and outbuildings, is a truly exceptional find. Combining historical charm with modern amenities and abundant outdoor space, it provides a unique and versatile living environment for those seeking a rural retreat with equestrian potential.

The main house features three spacious bedrooms, filled with natural light and offering a warm, inviting atmosphere.

The property includes a self-contained one-bedroom annex, perfect for guests, extended family, or potential rental income. The annex is equipped with its own kitchen living area, bedroom, and

bathroom, providing complete independence.

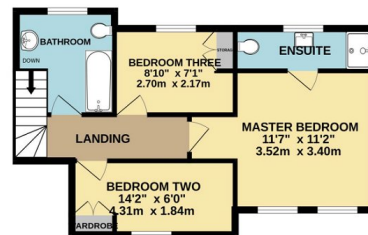
Key Features

- 3 bedroom period property
- Three and a half acres of land
- Stables
- Outbuildings
- Self contained one bedroom annexe
- Unique and versatile accommodation
- Far reaching views
- Semi rural location

GROUND FLOOR
950 sq.ft. (88.2 sq.m.) approx.



1ST FLOOR
464 sq.ft. (43.1 sq.m.) approx.



TOTAL FLOOR AREA: 1413 sq.ft. (131.3 sq.m.) approx.

Whilst every attempt has been made to ensure the accuracy of the floorplan contained here, measurements of doors, windows, rooms and any other items are approximate and no responsibility is taken for any error, omission or mis-statement. This plan is for illustrative purposes only and should be used as such by any prospective purchaser. The services, systems and appliances shown have not been tested and no guarantee as to their operability or efficiency can be given.
Made with Metropix ©2024